

High Pressure Carbon Dioxide

3 in. – 4 in. Lock-Out Valve

Description

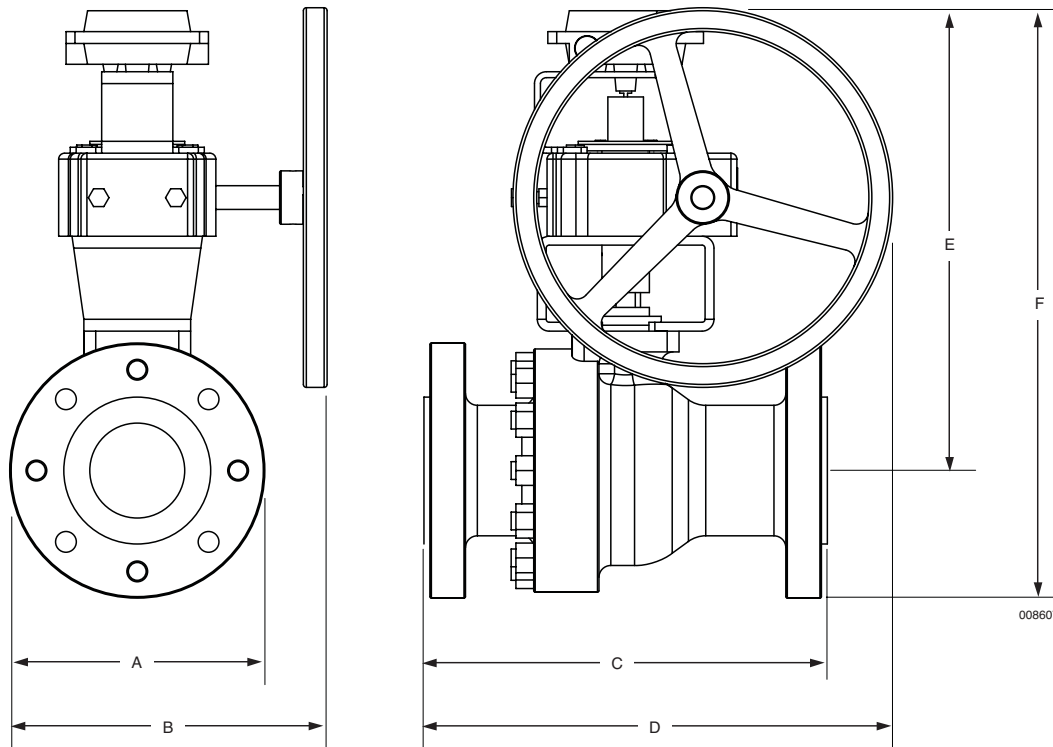
The lock-out valve is a manually operated ball valve installed in various locations of the piping system. The valve is used to inhibit the discharge of CO₂ into an entire system or a specific area of a system when maintenance of the system or entry into the protected space is required. The valve is equipped with a locking device to padlock the valve in the open or closed position. Each valve is equipped with a monitoring switch to provide constant supervision of the valve at the control panel with contacts for the open and closed positions. Install warning sign, Part No. 428974, in an easily visible location near valve.

Approvals

UL (EX2968)
Listed for use with FM Approved systems

Valve Material

Corrosion-Resistant Painted Steel Body
316 SS Ball, Stem, and Hardware
Reinforced Teflon Seats



008607

Dimensions								
Size	Part No.	A in. (mm)	B in. (mm)	C in. (mm)	D in. (mm)	E in. (mm)	F in. (mm)	Weight lb (kg)
3"	437216	8.25 (210)	12.43 (316)	14 (356)	16.13 (410)	17.03 (433)	21.15 (537)	137 (62.1)
4"	437217	10.75 (273)	13.38 (340)	17 (432)	19.75 (502)	19.51 (496)	24.88 (632)	247 (112.0)