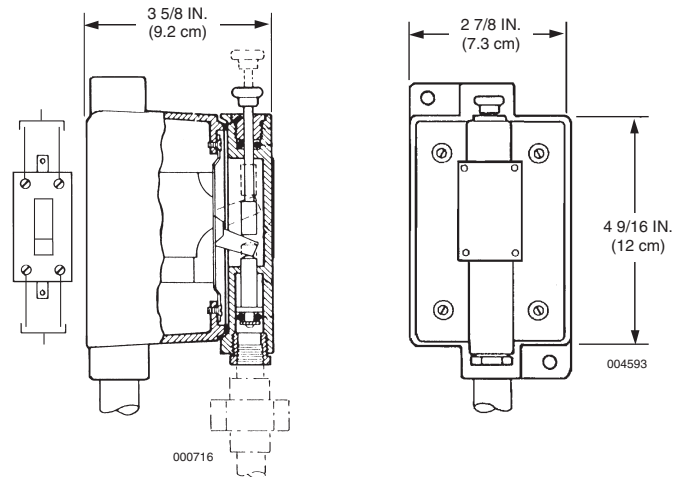


Pressure Switch – DPST

The pressure switch can be used to open or close electrical circuits to either shut down equipment or turn on lights and alarms. The double pole, single throw (DPST) pressure switch is constructed with a gasketed, water-tight housing. The housing is constructed of malleable iron. A 1/4 in. NPT pressure inlet is used to connect the pressure switch to the 1/4 in. actuation piping between the ANSUL AUTOMAN II-C release and the pneumatic actuator on the master SAPPHIRE tank valve.

Minimum operating pressure is 50 psi (3.5 bar)



Shipping Assembly Part No.	Description
46250	Pressure Switch – DPST

Component	Material	Thread Size/Type	Electrical Rating	Approvals
Pressure Switch DPST	Switch: BAKELITE Housing: Malleable Iron Piston: Brass Cover: Brass	Conduit Inlet: 3/4 in. NPT Female Pressure Inlet: 1/4 in. NPT Female	2 HP – 240 VAC/480 VAC 2 HP – 250 VDC 30A – 250V AC/DC 5A – 480V AC/DC	UL Listed ULC Listed FM Approved