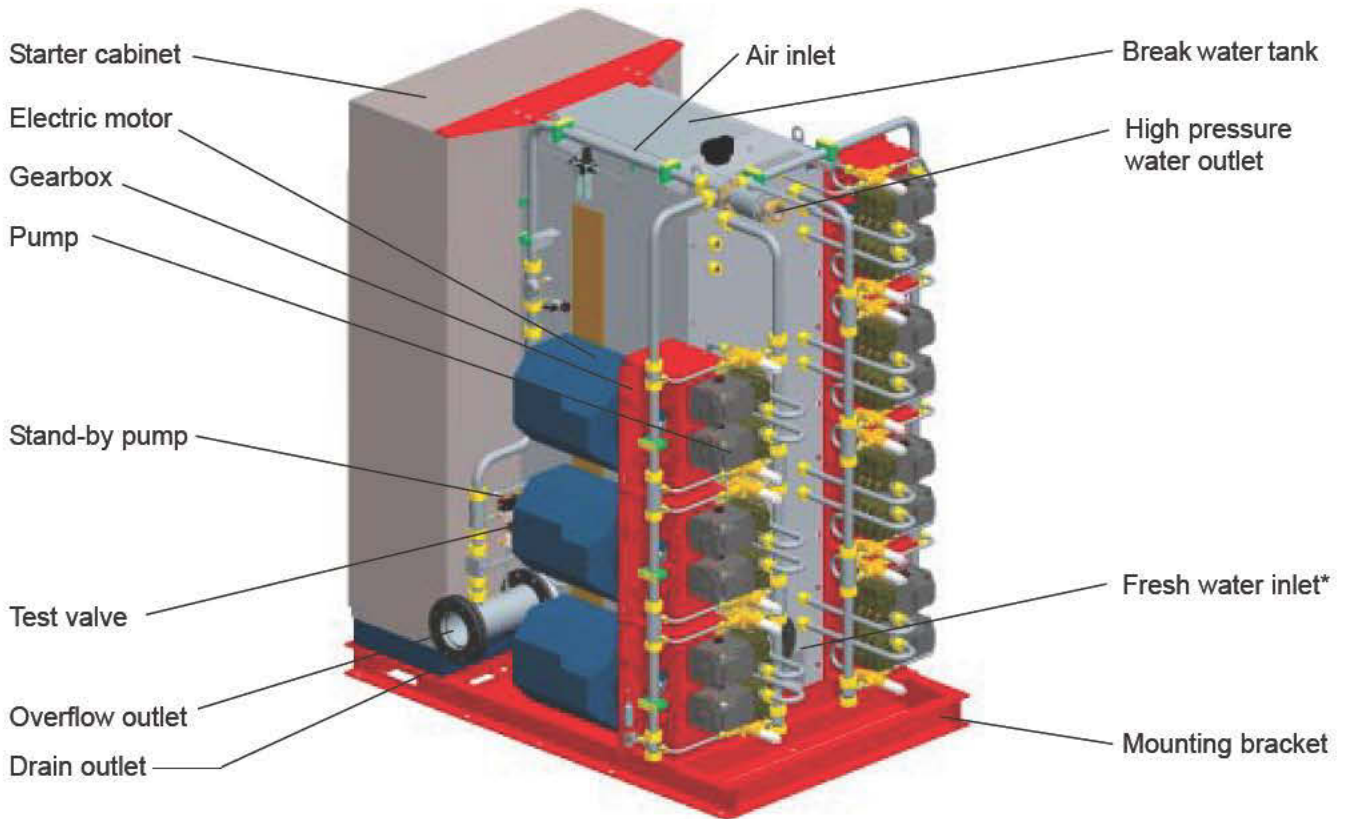




Sprinkler Pump Unit SPU 6+1

Product E01240.1

08 Feb 2008



* Use Marioff feed water filter when required. Consult your Marioff dealer for further details.

Unit output pressure	Length [mm]	Width [mm]	Height [mm]	Mass (dry) [kg]	Mass (wet) [kg]	Max. output [lpm]
140-80 bar	1925	1431	2341	2400		584
140-140 bar				3150		

Description

The SPU 6+1 consists of six pump modules, added with one more redundancy pump module required in Marine installations. Each module consists of an electric motor running via gearbox two high pressure pumps to produce the high pressure water flow needed in the sprinkler system in the case of a fire accident.

The pressure produced by pumps can be adjusted from 80 bar to 140 bar respectively, according to the application. The pump modules are started sequentially, thus reducing the electric power peak loads. In stand-by position, the system pressure is maintained at 25 bar by means of the pneumatic stand-by pump.

The pump unit can be started automatically or manually. Automatic start is activated by either the flow signal or the pressure signal. Manual start can be launched either from the external release panel or from the Starter Cabinet, switching on the pump modules one by one. External release and indication panel is normally included in the Marioff supply. The system start signal can also be given by the fire detection system (FDS) via the external panel.

NOTE! Service area requirement

Reserve free space around the unit: at least 500 mm on both sides of the motors and at least 700 mm in front of the starter cabinet doors. This area needs to be kept available for service and maintenance work.



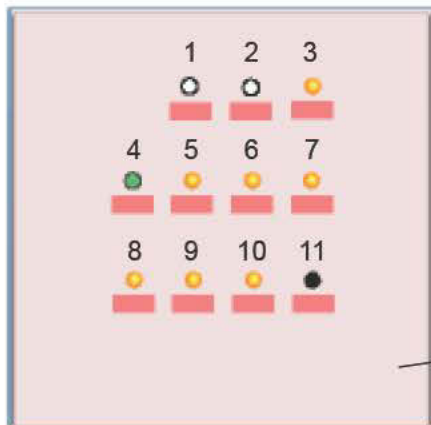
Marioff Corporation Oy • Virmatie 3 / P.O.Box 86, FI-01301 Vantaa, Finland
 Tel. +358 (0)9 870 851 • Fax +358 (0)9 8708 5399 • www.marioff.com



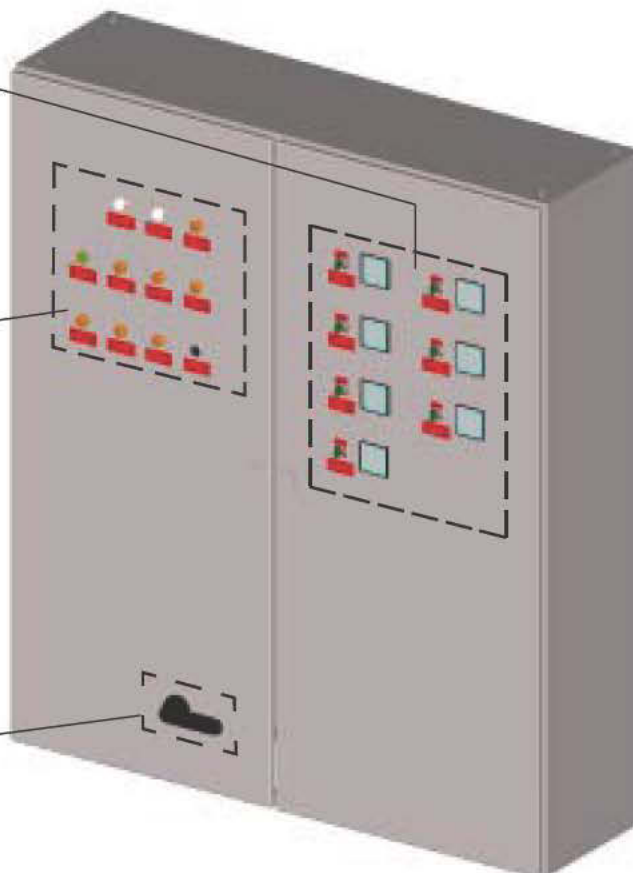
Sprinkler Pump Unit SPU 6+1 Starter Cabinet

Starter Cabinet for product E01240.1

08 Feb 2008



Manual start switch, lamp and motor ampere meter (x 7)



Main power switch

1. Main Switchboard Power supply indication lamp
2. Emergency Switchboard Power supply indication lamp
3. Control voltage fault lamp
4. Control system on lamp
5. Battery charger fault lamp
6. Earth fault lamp
7. Reset push button and lamp
8. Nitrogen pressure low lamp (if applied)
9. Pump unit fault lamp
10. Out of water lamp
11. Lamp test push button

The electric power to the starter cabinet is normally supplied from the Main Switchboard (MSB). In case of a power failure, the supply from the Emergency Switchboard (ESB) is automatically switched on. The enclosure class is IP54.

The following signals will usually be led to the ship's automation system: HI-FOG system activated, pump unit fault, out of water in break water tank. In addition, the start request to the external feed water pump is given if the starter of the feed water pump is not in the starter cabinet.

The starter cabinet is equipped with necessary devices to master the optional Water Accumulator Unit control.

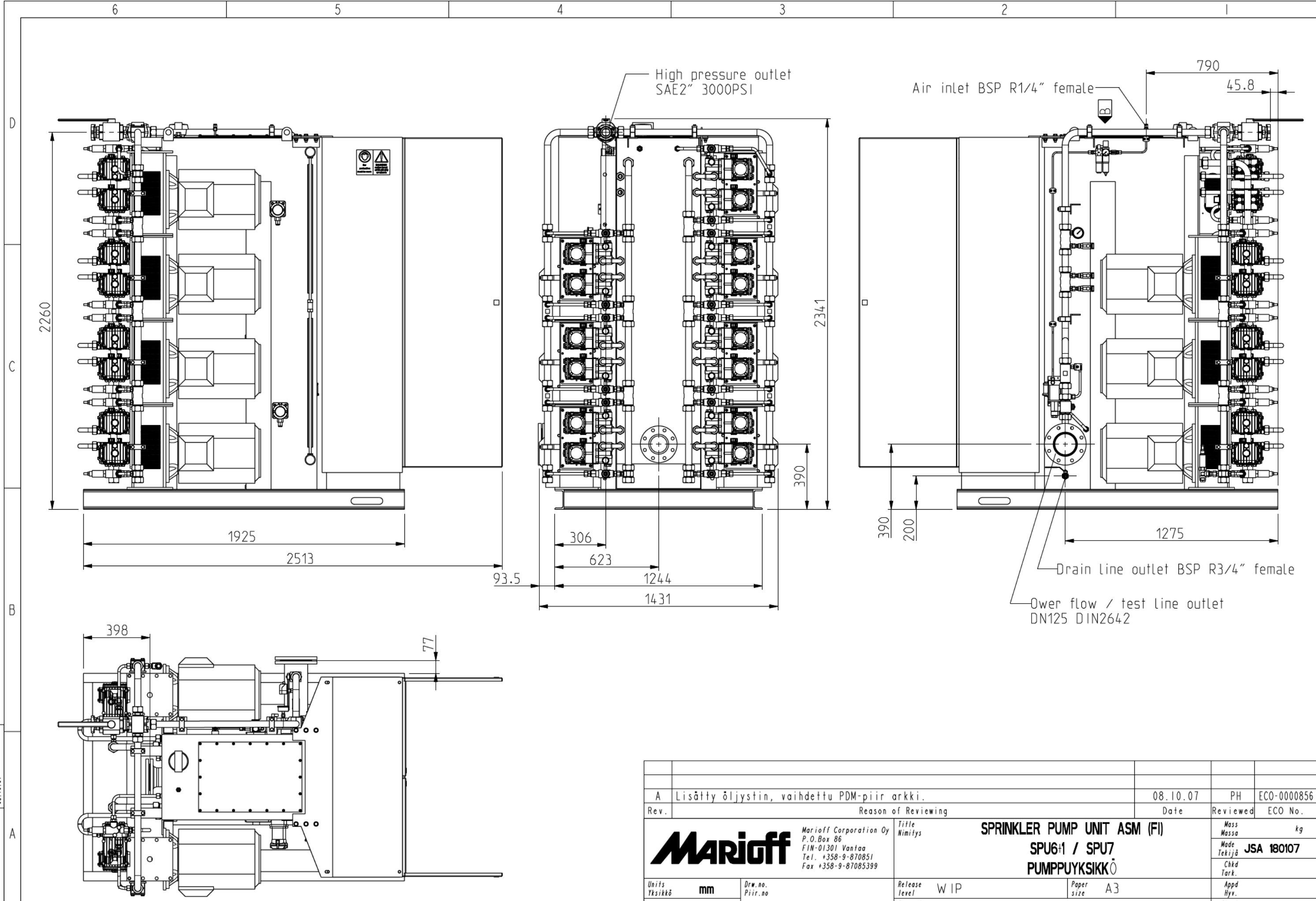
When ordering the SPU, the Starter Cabinet must be defined separately (various voltage, frequency and other options available). Other hardware options and possible FDS connections must also be defined when ordering the unit.

Options for	SPU 6+1 140-140/584, SPU 6+1 140-80/584
Soft starters for each high pressure pump motors to reduce the starting current of the motors. Stand-by heaters for the motors.	

Voltage and Frequency options (to be defined when ordering)	
140-80 bar units, 6 x 15,5 kW, total 93 kW	
140-140 bar units, 6 x 27 kW, total 162 kW	
690 VAC 50 Hz	690 VAC 60 Hz
400 VAC 50 Hz	440 VAC 60 Hz
380 VAC 50 Hz	



Marioff Corporation Oy • Virmatie 3 / P.O.Box 86, FI-01301 Vantaa, Finland
Tel. +358 (0)9 870 851 • Fax +358 (0)9 8708 5399 • www.marioff.com



08.10.07
002345_SPU7

A		Lisätty öljystin, vaihdettu PDM-piir arkki.		08.10.07	PH	ECO-000856
Rev.	Reason of Reviewing			Date	Reviewed	ECO No.
		Marioff Corporation Oy P.O. Box 86 FIN-01301 Vantaa Tel. +358-9-870851 Fax +358-9-87085399		Title SPRINKLER PUMP UNIT ASM (FI) SPU6+1 / SPU7 PUMPPUYKSIKKÖ		Mass Massa kg
Units Yksikkö	mm	Drw.no. Piir.no	DMAUSP002345 A		Release level WIP	Paper size A3
Scale Suhde	1:20	Model 002345_SPU7		Chkd Tark.		Appd Hyv.
						Sheet Sivut 1/3
This drawing is a property of Marioff Corp. It is not to be disclosed, traced, copied or published without our written consent. Not to be misused in any way.						