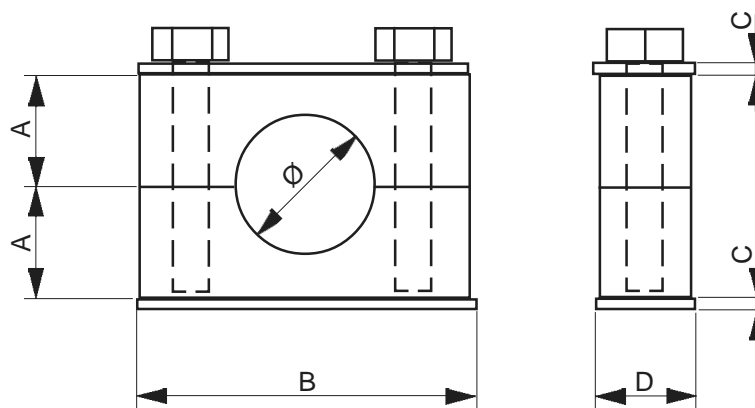
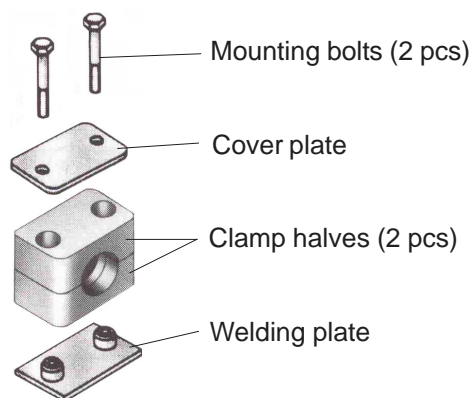


Stock code	Type	Clamp material	Ø [mm]	A [mm]	B [mm]	C [mm]	D [mm]	Hexagon head bolt
A10010.1	RAP3-112	Polypropylene	12	13,5	36	3	30	M6 x 30
A10015.1	RAP3-216	Polypropylene	16	16,5	42	3	30	M6 x 35
A10025.1	RAP3-325	Polypropylene	25	17,5	50	3	30	M6 x 40
A10030.1	RAP3-430	Polypropylene	30	21,0	59	3	30	M6 x 45
A10035.1	RAP3-538	Polypropylene	38	29,0	72	3	30	M6 x 60
A10080	RCP1-460,3	Polypropylene	60,3	45,0	*	10	45	M12 x 100

\*) for A10080:

Clamp halves and cover plate, length 115 mm  
Welding plate, length 140 mm



**Materials for all sizes:**

Clamps	Polypropylene (green)
Cover plate	Zinc plated steel
Welding plate	Steel
Mounting bolts	Zinc plated steel

The acceptance criteria for stainless steel tube installation are:

Tube Ø [mm]	Distance between clamps [m]		
	NFPA	DNV	Marioff*
12	1,2	1,2	2,5
16	1,5	1,2	3,0
25	1,8	1,6	3,5
30	2,1	1,8	4,0
38	2,1	1,9	4,5
60,3			5,5
75			6,5

Use DNV tube clamp spacing only if DNV classed.

\*) distances defined by Marioff can be used when no stringent values are required by other instances