



# Polypropylene tube clamps with screw plate



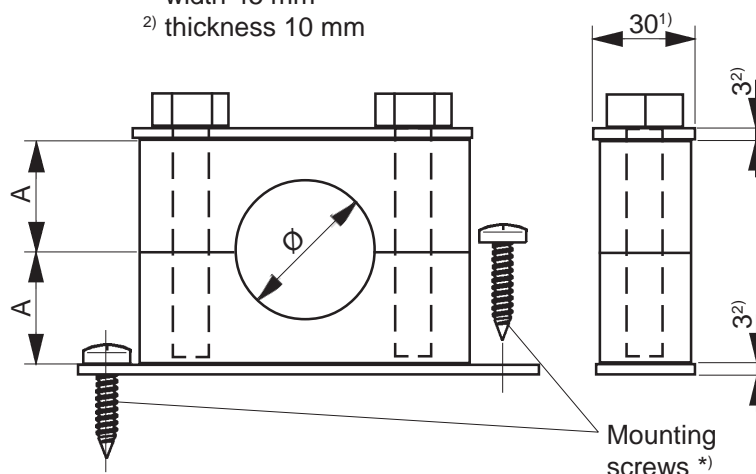
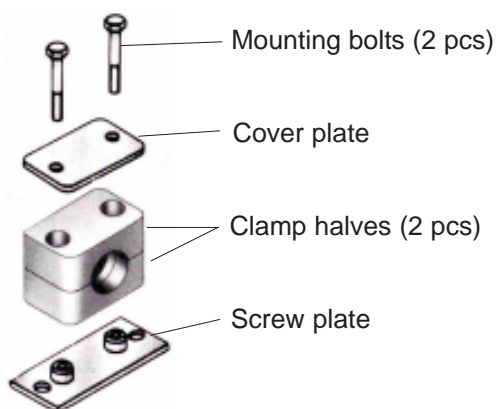
Stock codes A100XX (see table below)

03 May 2006

Stock code	Type	Clamp material	Ø [mm]	A [mm]	B [mm]	C [mm]	Hexagon head bolt
A10012.1	RAP6-112	Polypropylene	12	13,5	50	64	M6 x 30
A10017.1	RAP6-216	Polypropylene	16	16,5	56	70	M6 x 35
A10027.1	RAP6-325	Polypropylene	25	17,5	64	78	M6 x 40
A10032.1	RAP6-430	Polypropylene	30	21,0	73	87	M6 x 45
A10034.1	RAP6-538	Polypropylene	38	29,0	86	100	M6 x 60
A10087	RCP6-460.3	Polypropylene	60,3	45,0	160	190	M12x100

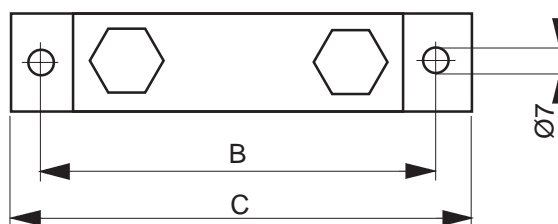
A10087 screw and cover plate only:

- 1) width 45 mm
- 2) thickness 10 mm



**Materials for all sizes:**

Clamps	Polypropylene (green)
Cover plate	Zinc plated steel
Screw plate	Zinc plated steel
Mounting bolts	Zinc plated steel



\*) Note: screw plate mounting screws not included as suitable screw type depends on mounting surface material.

The acceptance criteria for stainless steel tube installation are:

Tube Ø [mm]	Distance between clamps [m]		
	NFPA	DNV	Marioff**)
12	1,2	1,2	2,5
16	1,5	1,2	3,0
25	1,8	1,6	3,5
30	2,1	1,8	4,0
38	2,1	1,9	4,5
60,3			5,5
75			6,5

Use DNV tube clamp spacing only if DNV classed.

\*\*) distances defined by Marioff can be used when no stringent values are required by other instances