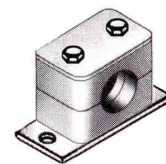




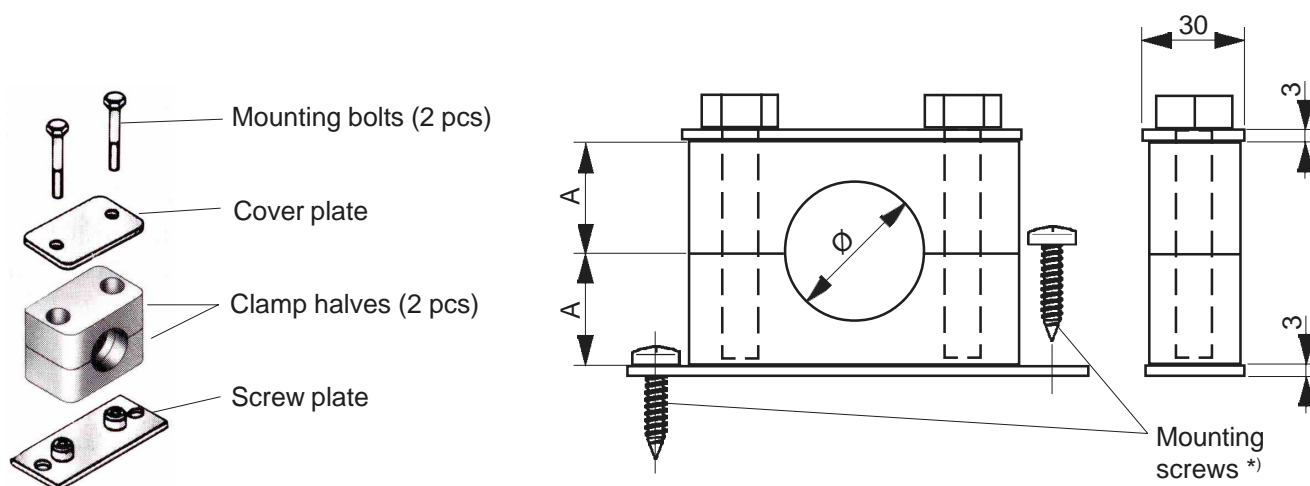
Aluminium tube clamps with screw plate



Stock codes A100XX (see table below)

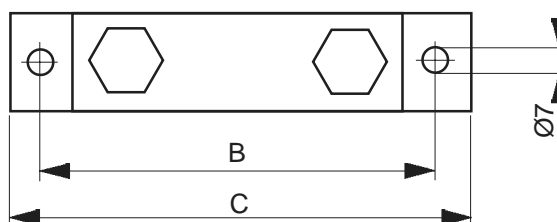
14 Oct 2004

Stock code	Type	Clamp material	Ø [mm]	A [mm]	B [mm]	C [mm]	Hexagon head bolt
A10012	RAA6-112	Aluminium	12	13,5	50	64	M6 x 30
A10017	RAA6-216	Aluminium	16	16,5	56	70	M6 x 35
A10032	RAA6-430	Aluminium	30	21,0	73	87	M6 x 45
A10034	RAA6-538	Aluminium	38	29,0	100	M6 x 60	



Materials for all sizes:

- Clamps Aluminium
- Cover plate Zinc plated steel
- Screw plate Zinc plated steel
- Mounting bolts Zinc plated steel



*) Note: screw plate mounting screws not included as suitable screw type depends on mounting surface material.

The acceptance criteria for stainless steel tube installation are:

Tube Ø [mm]	Distance between clamps [m]		
	NFPA	DNV	Marioff*
12	1,2	1,2	2,5
16	1,5	1,2	3,0
25	1,8	1,6	3,5
30	2,1	1,8	4,0
38	2,1	1,9	4,5
60,3			5,5
75			6,5

Use DNV tube clamp spacing only if DNV classed.

*) distances defined by Marioff can be used when no stringent values are required by other instances