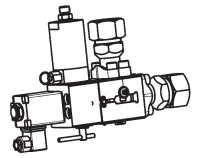




HI-FOG®

Technical Data Sheet TD9051 rev B

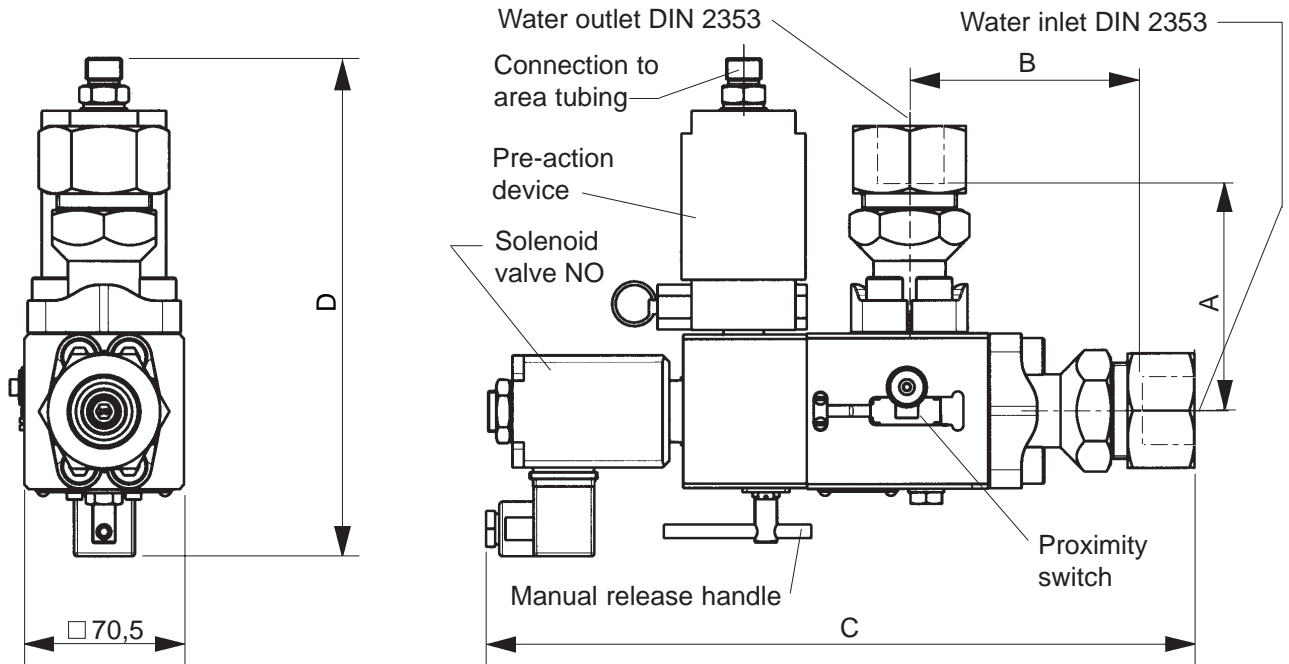
Double interlock pre-action valve NS 20



Stock codes D00090 and D00092

04 Jun 2007

Stock code	Valve type	A [mm]	B [mm]	C [mm]	D [mm]	Water tube O.D. [mm]	
						Inlet	Outlet
D00090	SVM 20-B2N-S30/30-20M	95,0	96,0	~ 313	~ 218	30,0	30,0
D00092	SVM 20-B2N-S25/25-20M	87,5	88,5	~ 306	~ 211	25,0	25,0



Description:

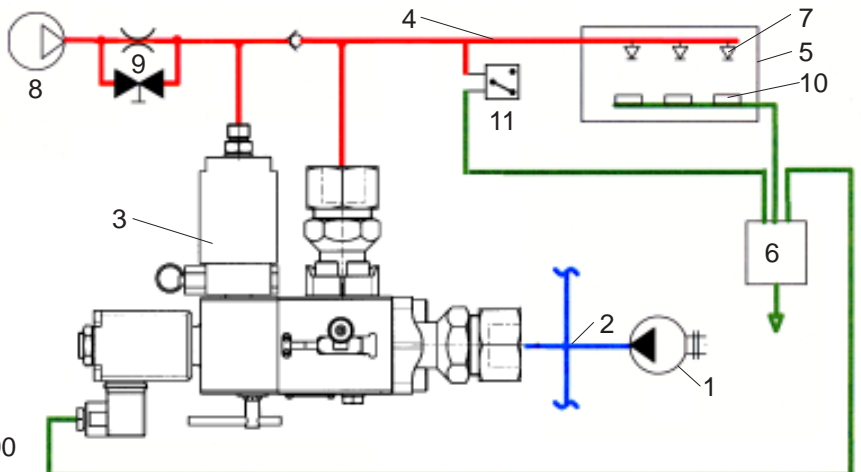
The pre-action valve system is suited for applications, where special care must be paid before releasing the fire protection system to avoid any damages that may be caused by the water.

The water distributing network between the pre-action valve and sprinklers is filled with pressurised (25 bar) air and the decreasing gas pressure caused by a broken bulb activates the pre-action valve - a fault-signal is also sent to control system. In pre-action valve application a sprinkler system is combined with a fire detection system (FDS). To release the water mist, both the sprinkler bulb(s) must be broken and the FDS must have detected a fire. A broken sprinkler bulb alone or a detected fire alone does not release the valve but only pre-activates the pre-action valve.

The manual release opens the pre-action valve immediately regardless the status of the sprinkler bulb(s) or the FDS. The water is allowed to flow up to the sprinkler(s) and if the bulb(s) is broken, the water is discharged into the protected space.

Pre-action valve application - schematic drawing

1. Pump unit
2. Supply tubing
3. Pre-action valve
4. Area tubing (pressurised gas filled)
5. Protected area
6. Control panel
7. Sprinkler (bulb released)
8. Compressed air supply
9. Orifice and by-pass valve
10. Fire detector
11. Pressure switch



NOTE: accessories not included in D00090 or D00092.



Marioff Corporation Oy, P.O. Box 86, Virmatie 3, FIN-01301 Vantaa, Finland, tel +358 9 870 851, fax +358 9 8708 5399, e-mail info@marioff.fi, www.hi-fog.com